



Kasa Smart Light Bulb

Multicolor

KL130B



Remote Control



Scheduling



No Hub Required



Voice Control

Highlights

Multicolor

With a wide range of colors and adjustable brightness, the Kasa bulb offers endless lighting possibilities to fit any environment and mood. You can choose a light for everything from a dinner party to a late-night study session. It can be controlled from anywhere with the Kasa app or with simple voice control via Google Assistant, Alexa or SmartThings.



*The Alexa and Google Assistant are not available in all languages and countries.

Multi-scene

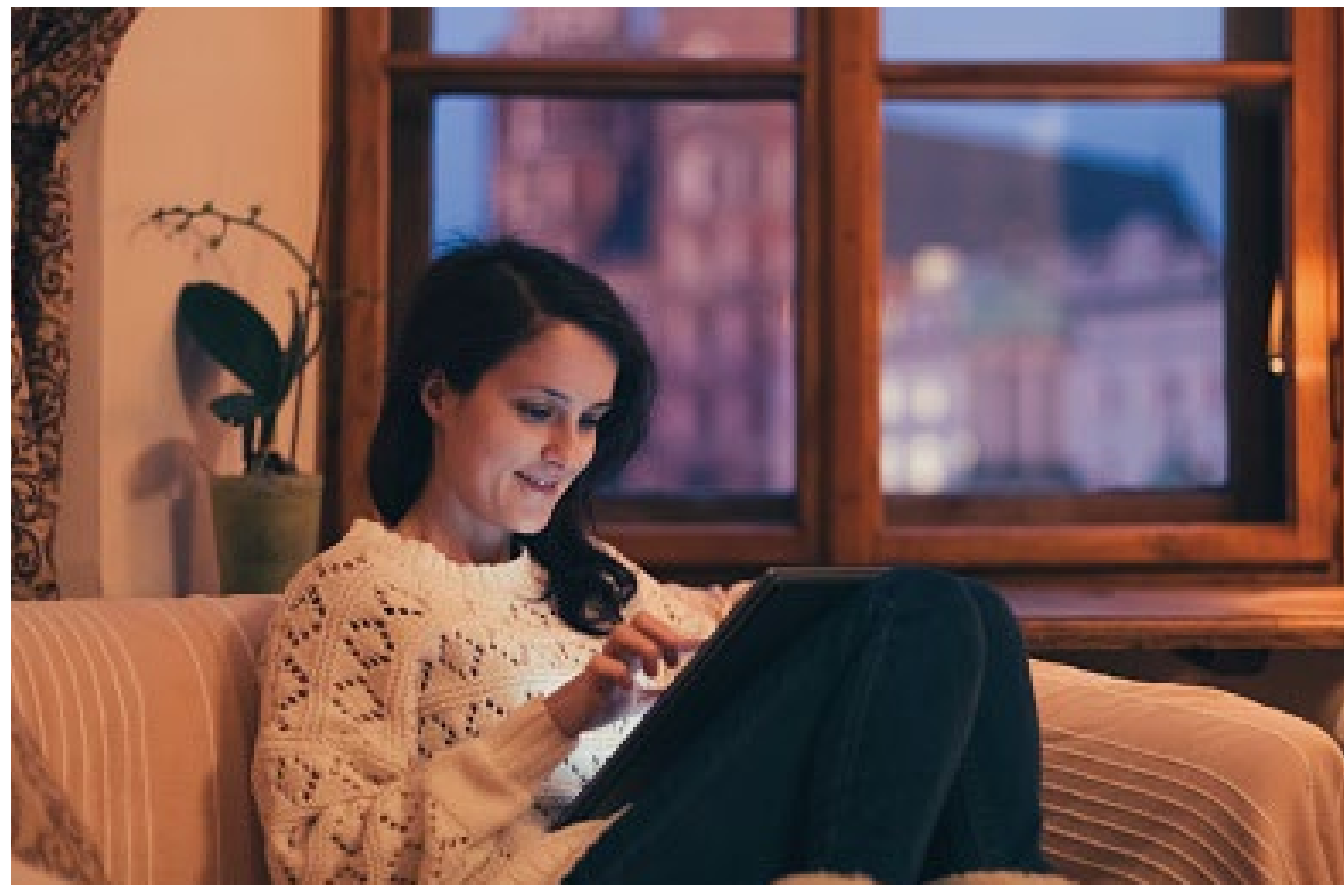
Create multiple scenes like theater scene, party scene or sleeping scene with different settings for various occasions, and tap yours when you want the light your way.



Highlights

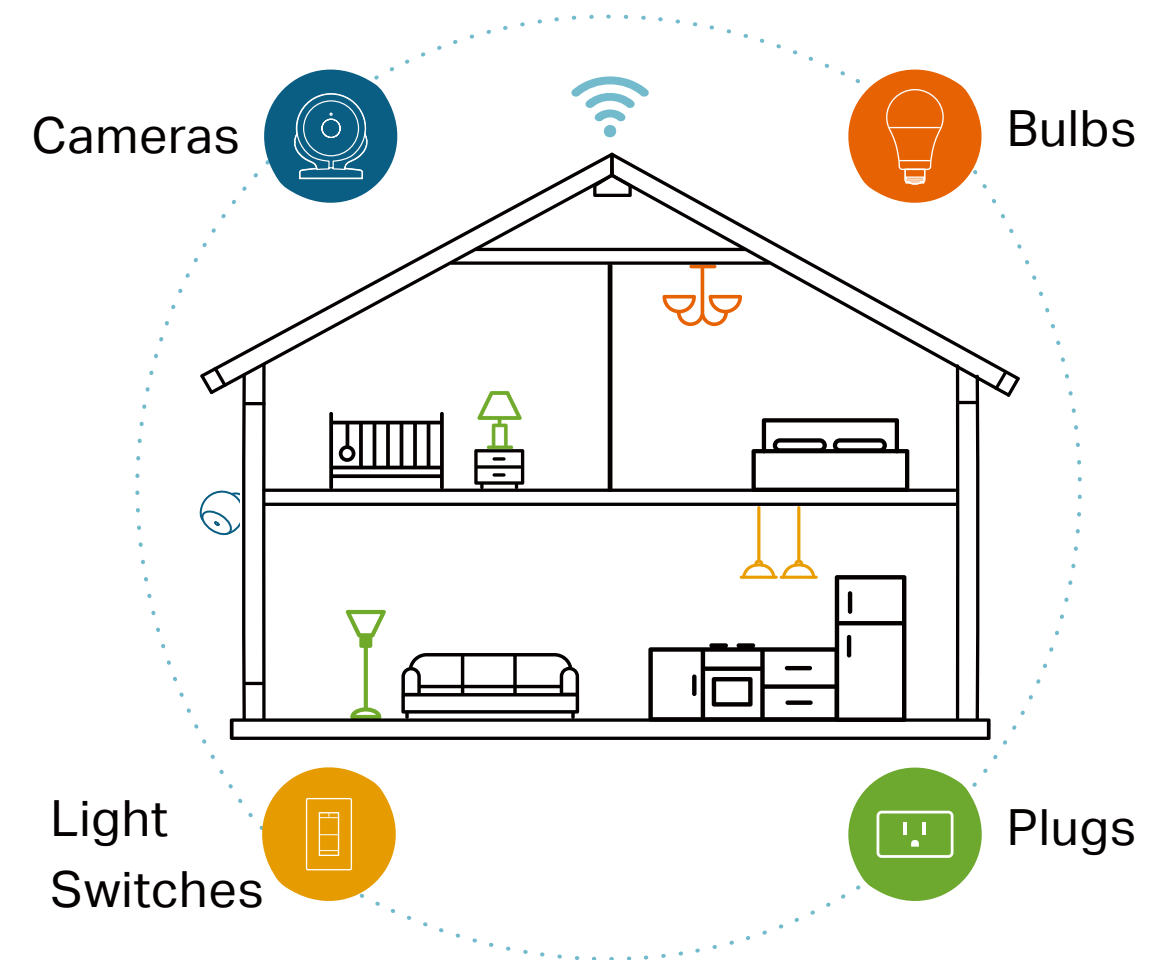
Schedules

Use your Kasa Smart app to schedule your light bulb to automatically switch on and off when you're home or away.



Your Home. One App.

With the Kasa Smart app, you can easily access and control smart plugs, cameras, light switches, bulbs and more. Checking in on your home is only a few taps away.



Learn more at tp-link.com/smarthome

Features



Ease of Use

- No Hub Required – Connect to your existing Wi-Fi router with no extra hub required
- Remote Control – Control your smart bulbs from anywhere with the free Kasa app
- Scheduling – Set schedules to turn on/off the smart bulbs at any chosen time for your convenience
- Multi-scene – Save your light settings as different scenes to enjoy instant access to them
- Auto White – Set your bulb to automatically adjust its color temperature to match natural light patterns from dawn to dusk
- Smart Actions – With Smart Actions, your Kasa devices can work together to create a smarter smart home
- Grouping - Use Grouping to combine your Kasa devices with other Kasa Smart devices for seamless control with one single tap on your smartphone



Compatibility

- Works with Voice Assistants – Control smart bulbs using the leading voice assistants such as Amazon Alexa and Google Assistant.
- Compatible with Android, iOS – The free Kasa app lets you run smart bulbs from any Android (5.0 and higher) or iOS (iOS 10 and higher) devices
- Works with SmartThings – Control and manage your Kasa devices with SmartThings



Lighting

- Multicolor – Choose a different color for any occasion.
- Durable Bulb – Provide you stable and customized lighting for up to 22.8 years**

*60W equivalent

**Based on 3hrs/day

Specifications

Working Status

- Typical Lumen Output: 800 lm
- Input Power (Actual power draw in Watts): 10 W
- Color Temperature: 2500 K ~ 9000 K (adjustable via app and cloud)
- Rated Input Voltage: 220 -240 V 50/60 Hz
- Beam Angle: 230 Degrees typical
- Dimmable: Yes (via app and cloud only)
- Tunable: Yes (via app and cloud only)
- Color Changing: Yes (via app and cloud only)

Network

- Secured home Wi-Fi connection required
- Wi-Fi Protocol: IEEE 802.11 b/g/n
- Wi-Fi Frequency: 2.4 GHz
- System Requirements: Android 5.0 or higher, iOS 10 or higher

General

- Package Contents:
 - Kasa Smart Light Bulb
 - Quick Start Guide
- Lamp Base: A60 bulb, B22 fitting
- Weight: 0.304 lb (0.138kg)
- Dimensions: 2.36 x 4.76 in (60 x 121 mm)
- Certifications: CE, RoHS, SAA, RCM
- Operating Temperature: -15 °C~ 40 °C (5 °F ~ 104 °F)
- Operating Humidity: 10%~90% RH, Non-condensing

Specifications are subject to change without notice. TP-Link is a registered trademark of TP-Link Technologies Co., Ltd. The Works with SmartThings words and logo are trademarks of Samsung Electronics Co. Ltd. Other brands and product names are trademarks or registered trademarks of their respective holders. Copyright ©2020 TP-Link Technologies Co., Ltd. All rights reserved.